

ENERGIE

MOBILITÄT

RAUM-
PLANUNG

VER-
NETZUNG

SUBURBAHN LAB



Grafiken: Designed by Freepik

Research & developmentproject: Suburbahn

Conception of a test and demonstration area for housing and mobility in the vicinity of stations in Upper Austria's central region



Austrian Ministry for Transport, Innovation and
Technology



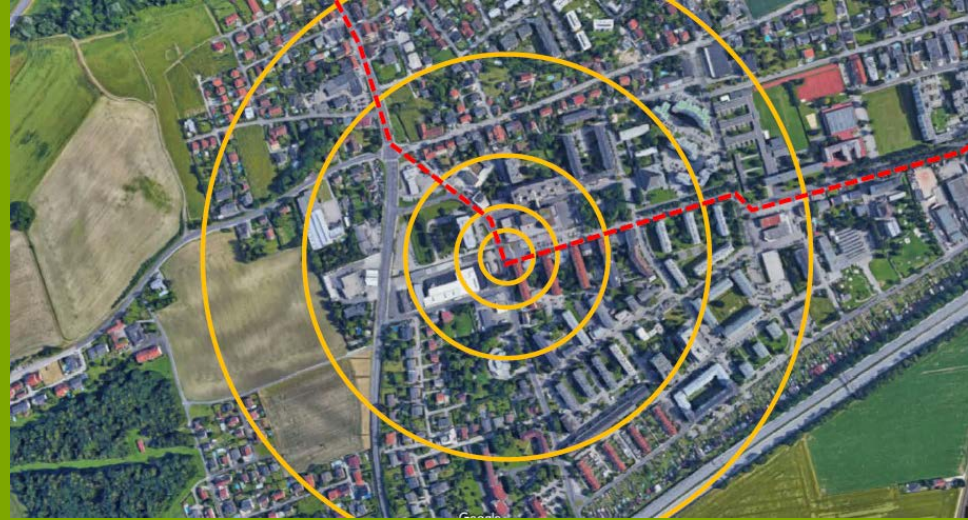
Stadt der Zukunft,
4. Ausschreibung

1 year, July 2016/2017

Team

- Project management:
 - stadtland Dipl.-Ing. Sibylla Zech GmbH
- Project partner:
 - Vienna University of Technology Department of Spatial Planning
 - Department of Transportation System Planning
 - Institute for Architecture and Design, Working Group for Sustainable Construction
 - Institute for Design and Effect Research

Demonstration and Test Area



Suburban area of Linz (Haid/Ansfelden)

The expansion of public transport systems (S-Bahn, StadtRegioTram) offers a favourable time frame.

The improved public transport sets an impulse for changes in mobility behaviour and offers points of reference for the combination of mobility solutions.

Goals of the project

- Building a network
- Developing the vision, goals and thematic orientation of the area
- Defining the basics for the future structures of the area

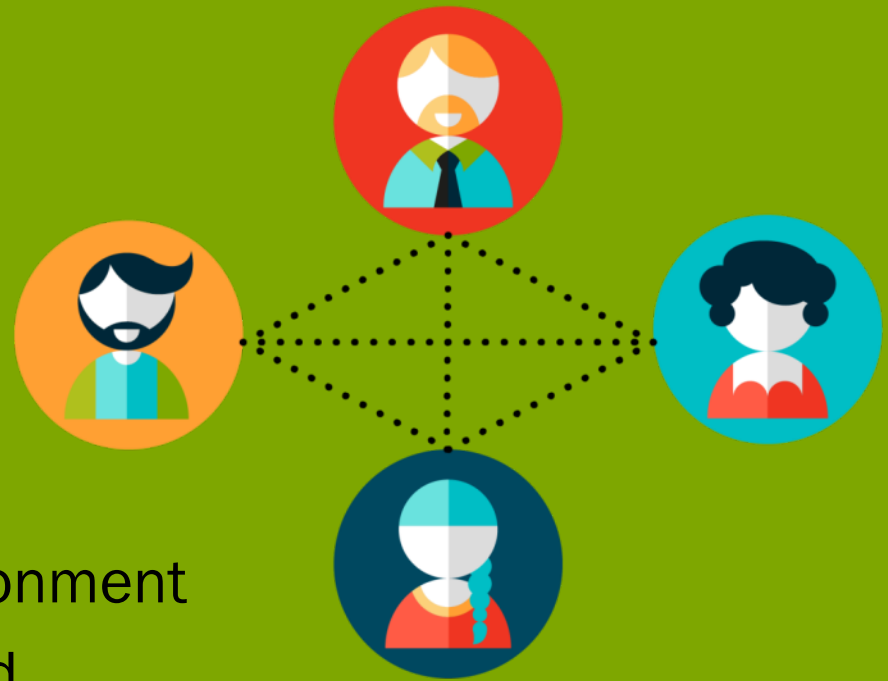
→ stakeholder process:
from big pictures to a roadmap



A LAB for Haid!

What is a LAB?

A LAB is an experimental environment in which innovative science and business solutions can be explored, tested and implemented in partnership with the population, politics, administration and other stakeholder groups.

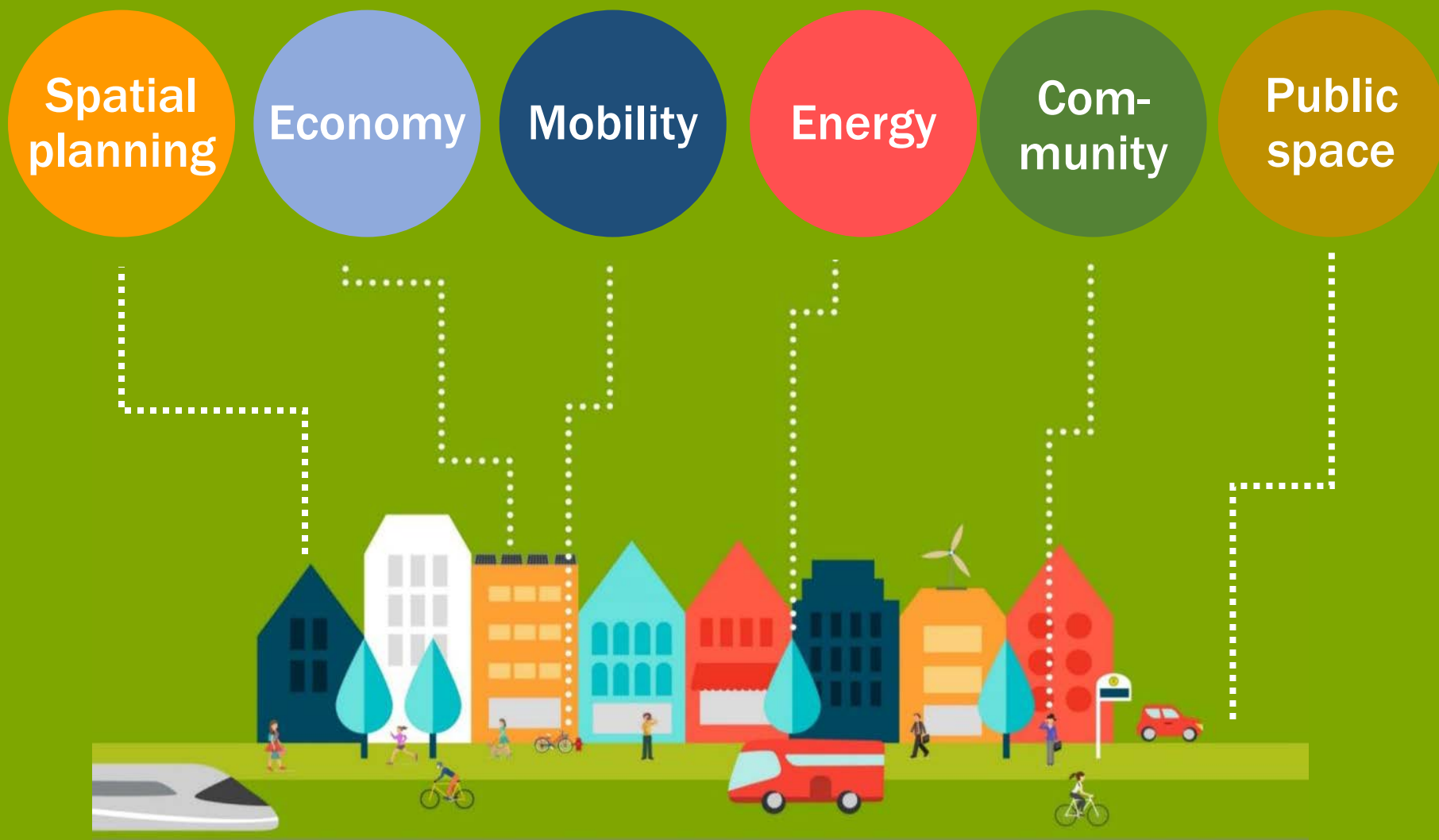


Ein LAB für Haid!

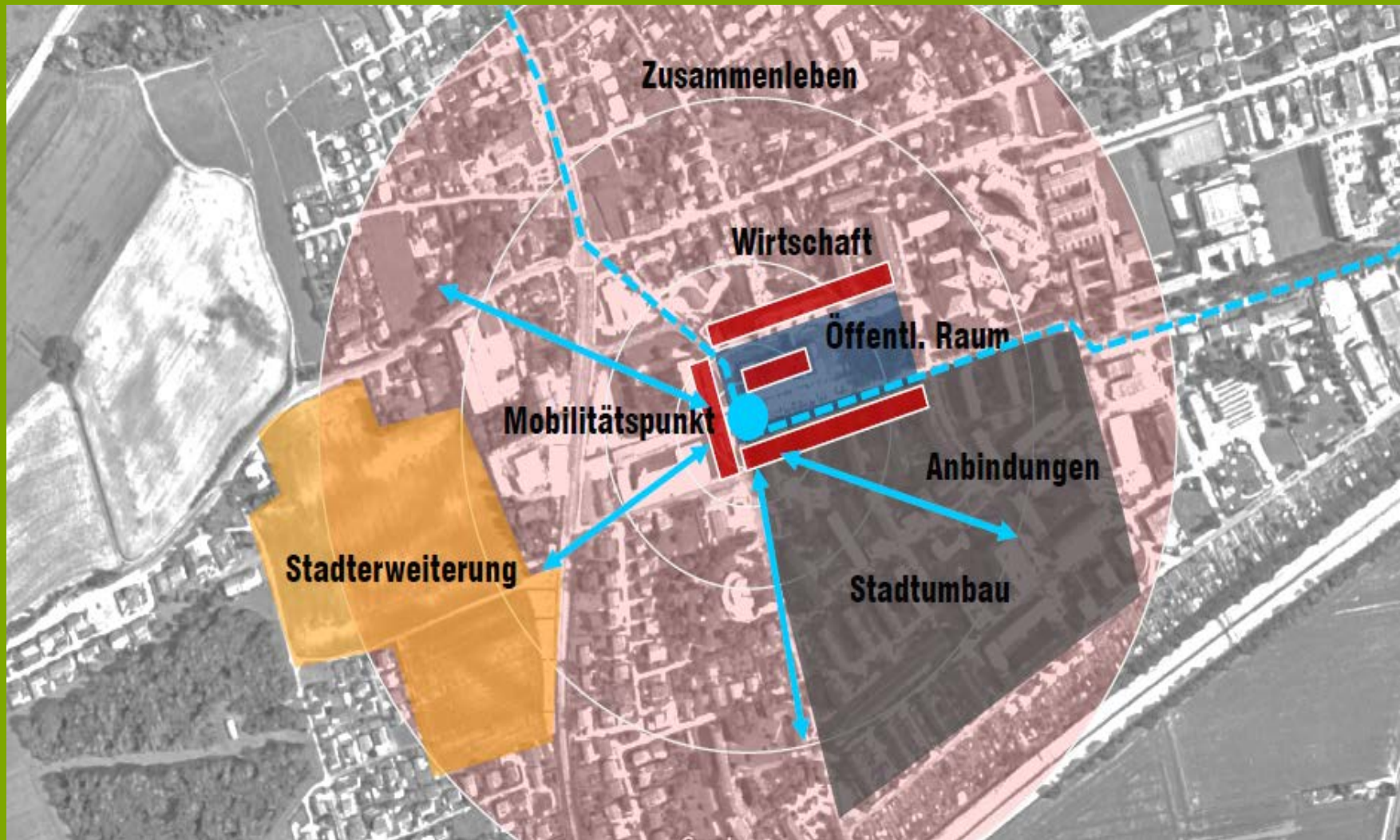
The HaidLAB

- offers a real development environment
- enables user-oriented innovation projects (co-creation)
- translates research results into marketable products and services (development-process)
- opens up access to users, administration etc. (multi-stakeholder)
- persists for a longer term

Subjects



Subjects



Haid LAB

Core Team

- City
- Region (Land)
- Public Transportation Company
- Project Team

Network

- Population /Civil Society
- Business owners / operators
- Public Transportation
- Companies
- Investors...

TRAMsformation Haid

