



CITY PLANNING ADMINISTRATION

# Sustainable Urbanism in Stockholm

Visitors group 28<sup>th</sup> of August 2014

Michael Erman, City of Stockholm

A world class  
Stockholm  
VISION2030



# Contents

- ❑ Urban Planning Department
- ❑ Sweden & Stockholm – overview and challenges
- ❑ Vision 2030 & Strategic planning
- ❑ Work for a low carbon community
- ❑ Urban mobility strategy
- ❑ Environmental programme 2012-2015
- ❑ Environmental profile area Royal Seaport
- ❑ Final remarks

[http://www.youtube.com/watch?v=53\\_qvMQfvOE](http://www.youtube.com/watch?v=53_qvMQfvOE)

A photograph of a long, multi-story residential building in Stockholm, Sweden. The building has a red roof and a facade of yellow and red panels. The text "The Stockholm City Planning Administration's mission" is overlaid on the image.

# **The Stockholm City Planning Administration's mission**

# Our mission includes to...

- To be an open, client friendly authority
- Do comprehensive and detailed planning, permissions
- Create conditions for a **world-class** Stockholm
- Deliver solutions to different demands incl. **public interests**
- Work in efficient, **open and creative processes**
- Develop Stockholm into an even more beautiful, attractive and high-quality as well as sustainable city
- Ensure the planning of **140 000 new dwellings** until 2030

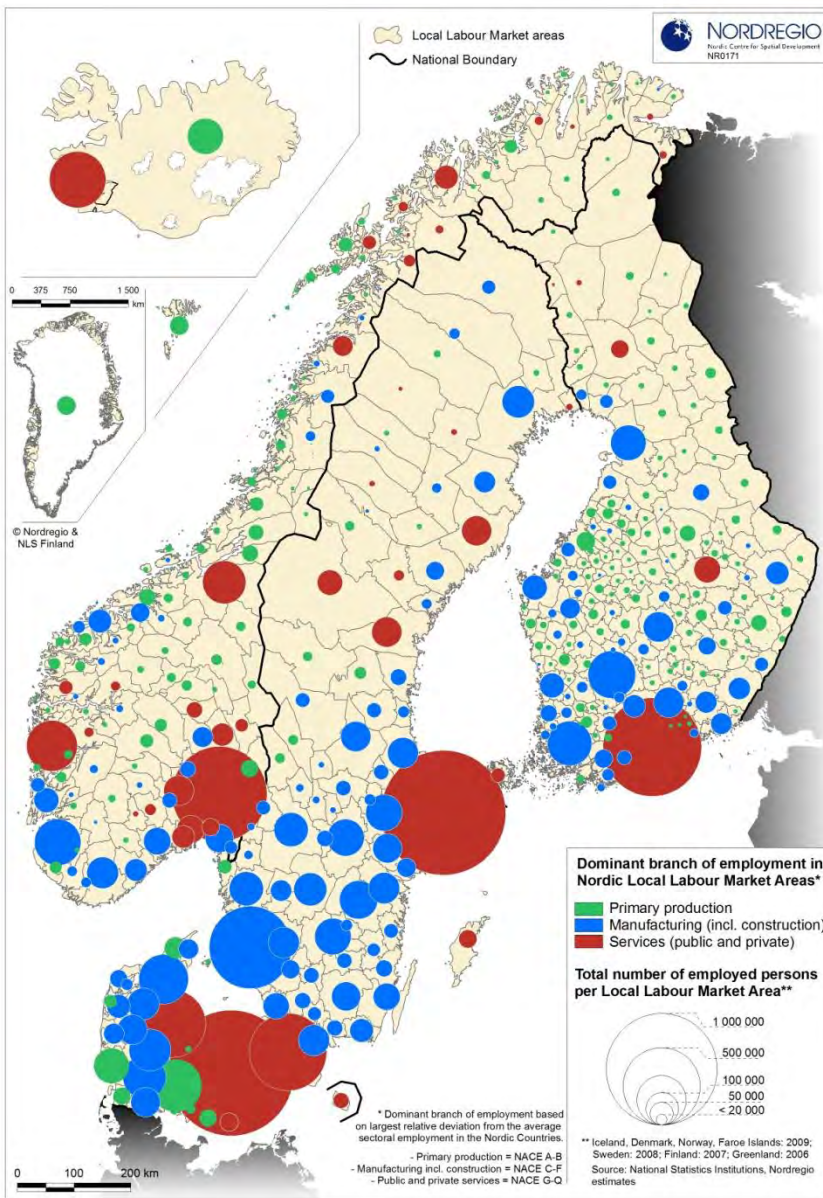


# Growth poles of Scandinavia

Capitals are major development poles  
Service sector dominates in bigger cities, exception Göteborg

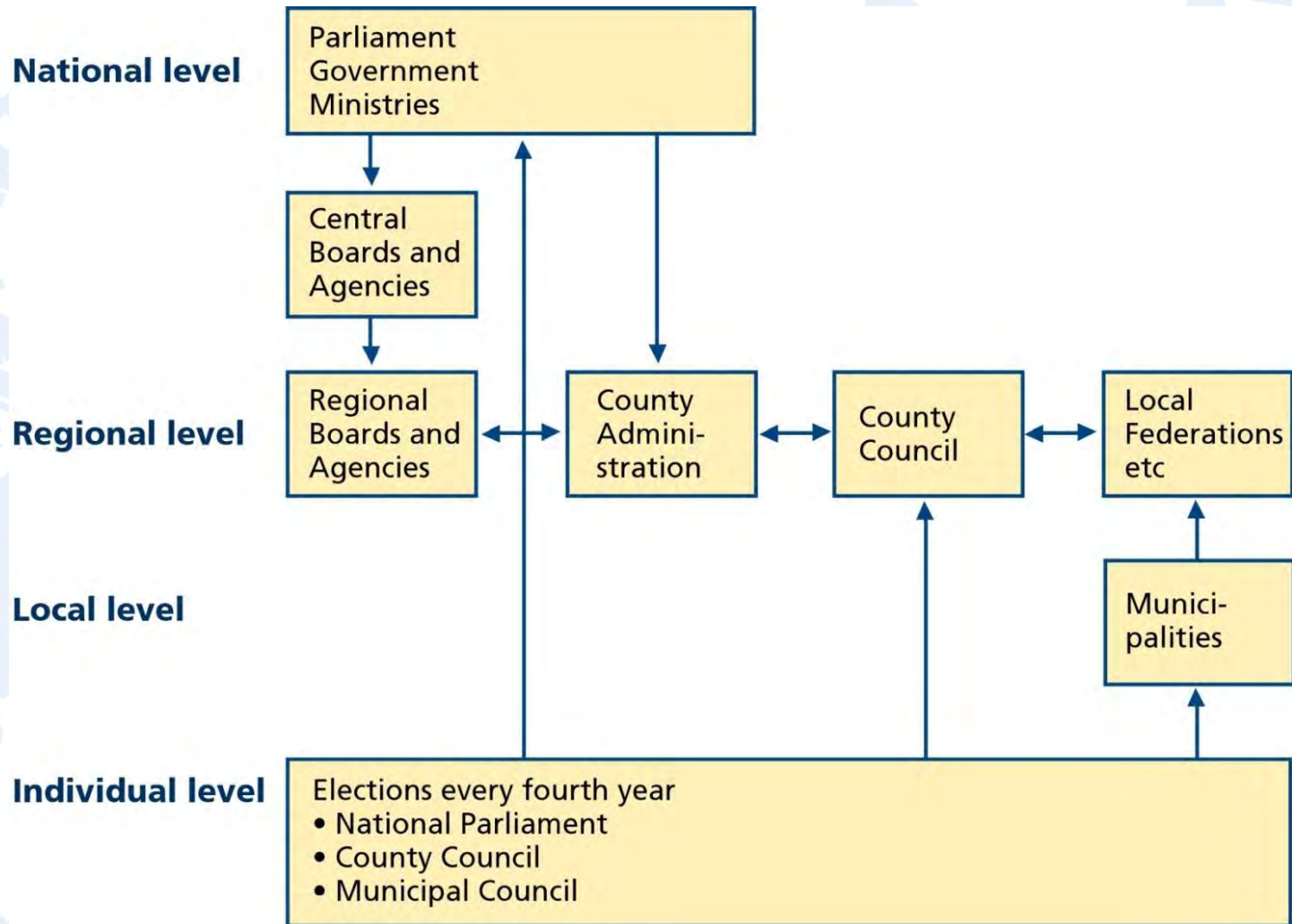
Manufacturing and industry dominate in southern Sweden, Finland und central Denmark

Also forestry and agriculture have still importance in big areas of e.g. Denmark



Source: Nordregio at [www.nordregio.se](http://www.nordregio.se)

# Administrative system in Sweden



Advisory

Regional Plan

County Council

Advisory

Comprehensive Plan

City Council

Legally binding

Detailed plan

Planning and  
Building Board

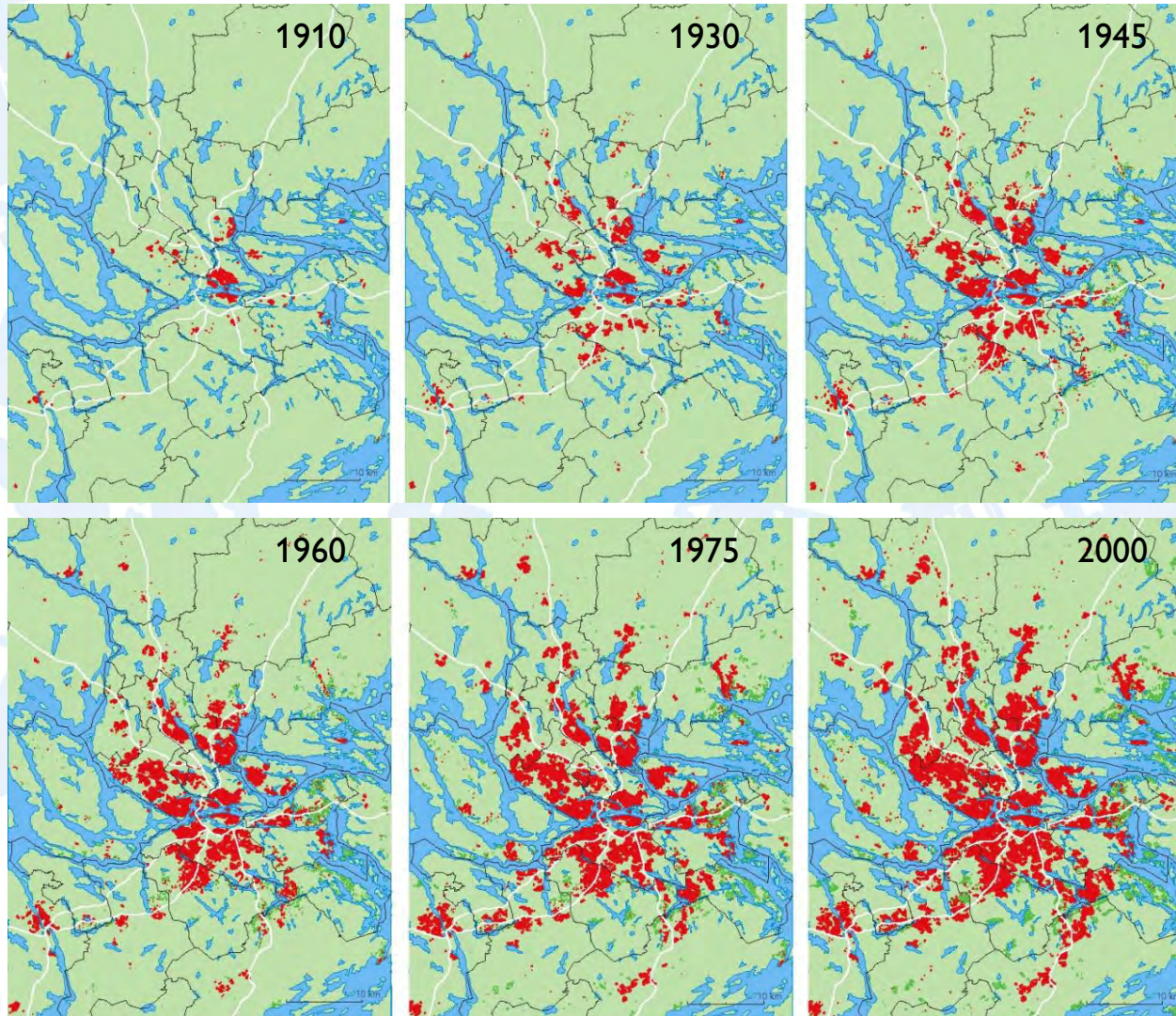
Legally binding

Building permission

Planning and  
Building Board



# Stockholm – A growing region...



From 340 000  
in year 1910 to  
905 000 today

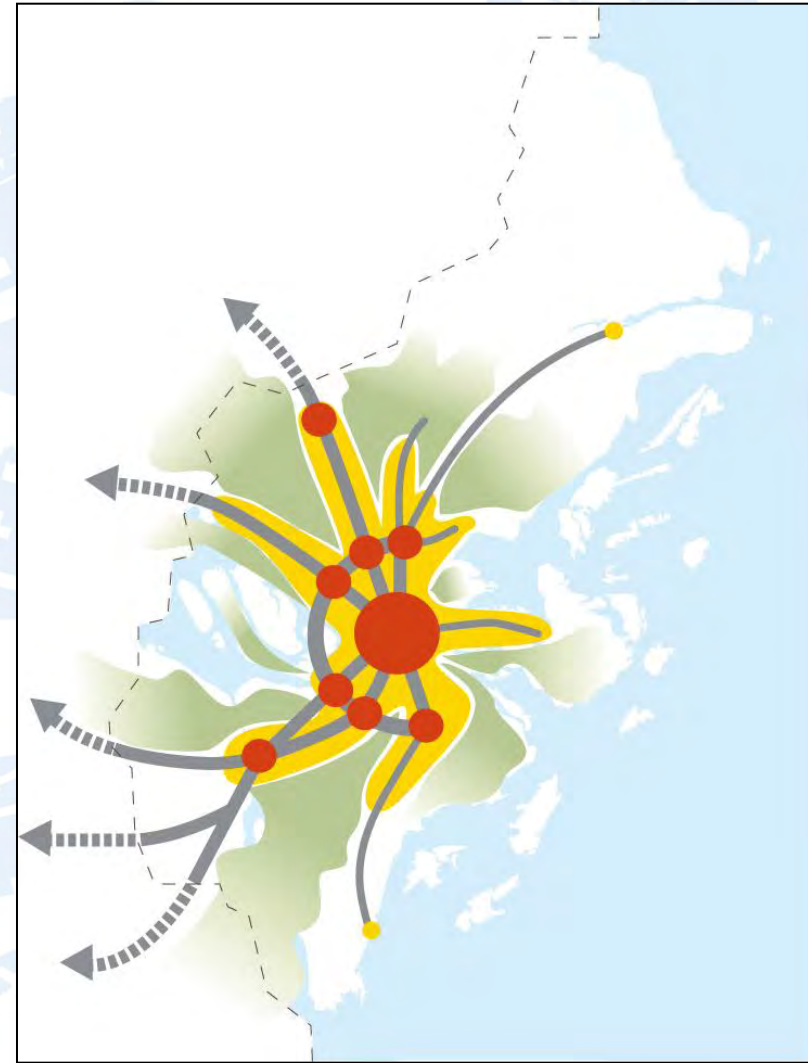
From an  
industrial city  
to a service  
dominated city

From a poor  
city to a  
wealthy city



# Overall concept for the Stockholm region

- A cohesive and growing region
- A resource-efficient and accessible urban structure
- A high-density and high-quality urban environment, with parks and green areas
- A cohesive green structure as well as new cross-city connections
- A robust blue structure in a growing region



# Polycentric spatial development concept



- 1+8 urban regional cores
- Public transport, quality housing, workplaces, service, education, culture, night-time economy
- 25 % of people live here

# Stockholm – „the capital of Scandinavia“

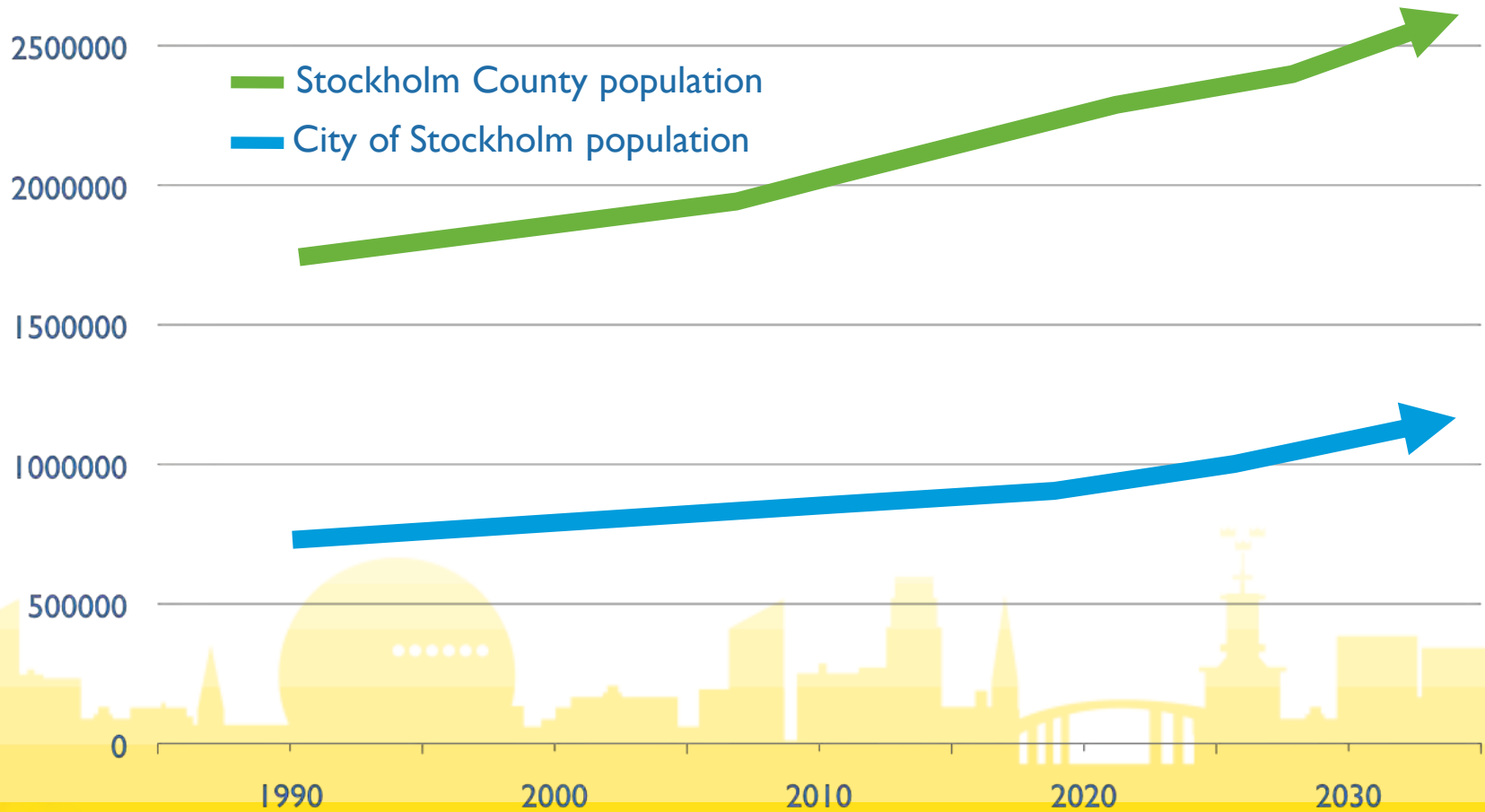
Stockholm Region = 26 cities and municipalities

	Region	City of Stockholm
Inhabitants	2,2	0,9
Workplaces	1,1	0,5
Housing units	1,1	0,5
Cars	0,8	0,3



All figures in million

# Stockholm is growing at a record pace





# Third major phases

1

2

3



# A sustainable, growing city

1

1900-1920

**Electrification**

Central Station

Frihamnen Port

**Stenstaden**

**District**

2

1950-1970

**Metro**

**District heating**

ABC suburbs

**Essingeleden**

**Motorway**

Million Programme

3

2000-

**Green city districts**

Service sector and research

**Citybanan**

City-wide fibre-optic  
network

**e-services**

Förbifart Stockholm

# Stockholm Vision 2030

A worldclass Stockholm

Adopted by the City Council in 2007

All plans/actions have to support its realisation

Three major themes with perspective 2030

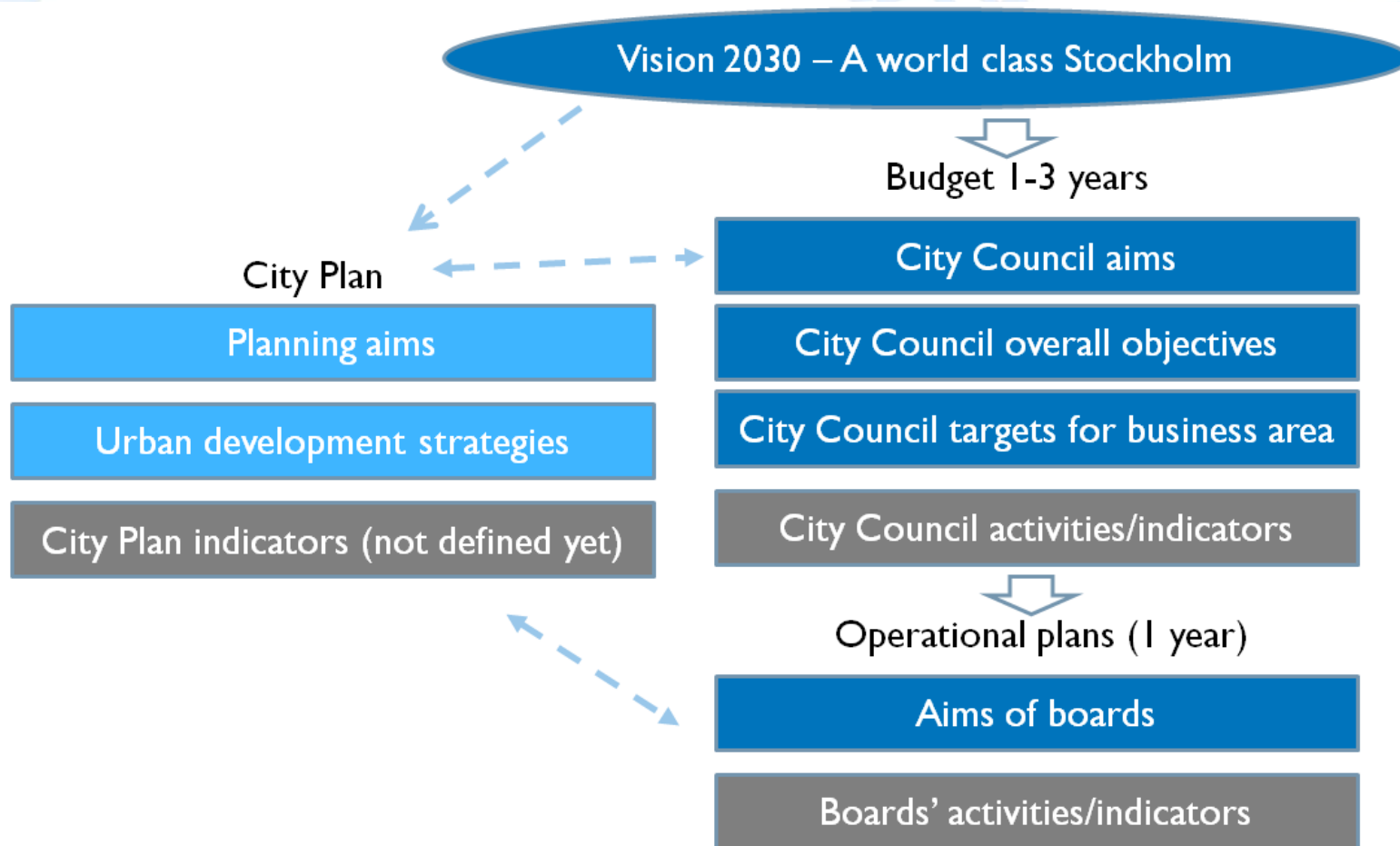
and the human dimension in focus:

- Multi-faceted and rich in experiences
- Innovative and growing
- The citizen's Stockholm





# Integrated management system basis for successful energy and climate work



# Biggest challenges for Stockholm

- Implementing ambitious goals of sustainability
- Reaching carbon neutrality and adaptation to changing climate
- More and affordable housing
- Planning and construction of 140000 new dwellings until 2030
- Renewal of 1960-1970 housing areas
- Socio-economic segregation
- Implementing and financing major infrastructure projects

Meeting those challenges requires a holistic perspective and balancing of diverse interests and goals



# One Vision – One Plan



# Involved residents

9

in 10 Stockholmers

Believe it is important to have a strategy for Stockholm's long-term development

7

in 10 Stockholmers

Are interested in environmental issues

8

in 10 Stockholmers

Believe Stockholm has what it takes to become a world-class city

- (1) Strengthen central Stockholm
- (2) Focus on Strategic Nodes
- (3) Connect city areas
- (4) Create a vibrant urban environment

...towards a dense and  
more connected  
Stockholm!



2023 (?)

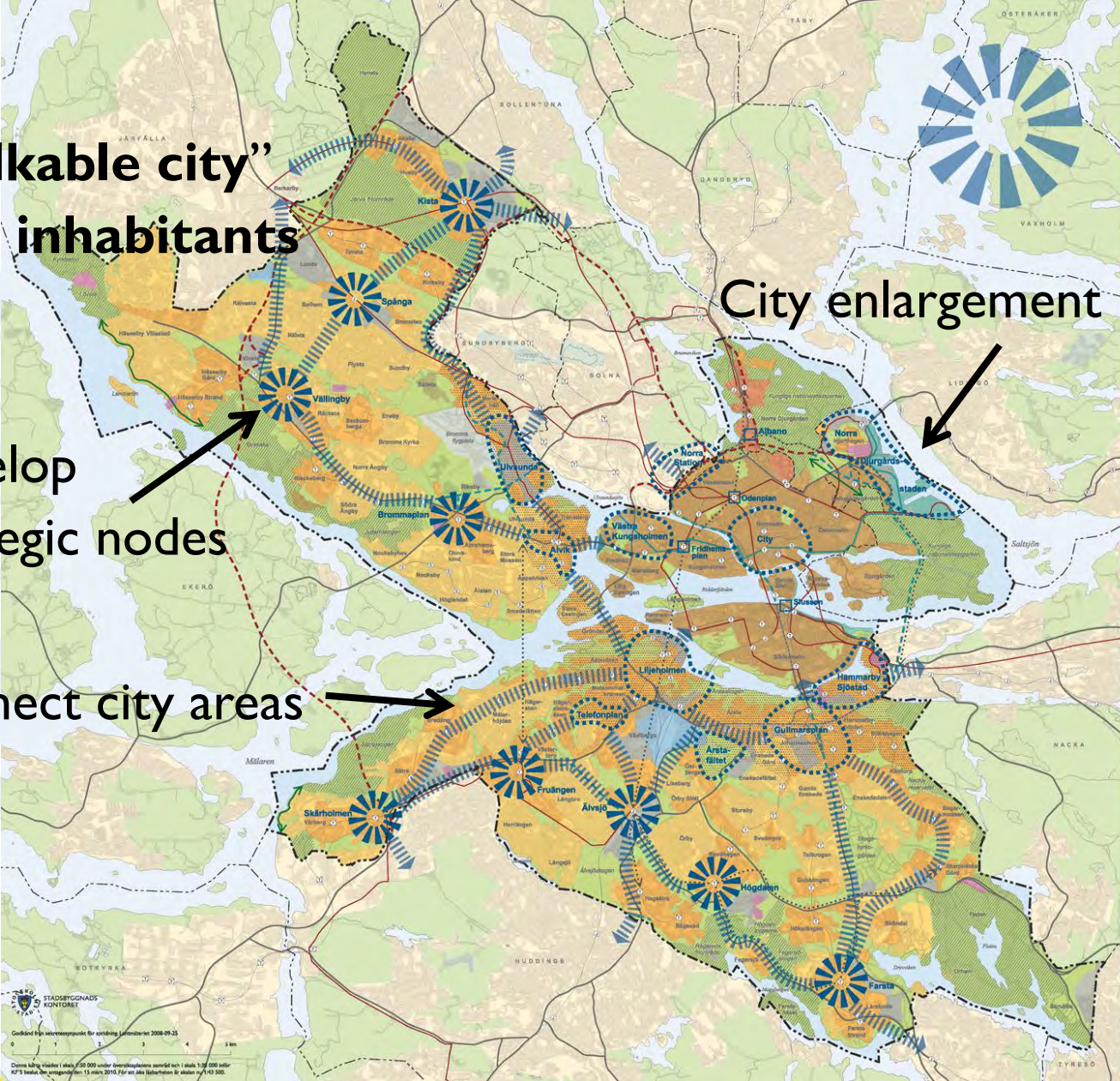
“The walkable city”

1 million inhabitants

Develop strategic nodes

Connect city areas

City enlargement



PROMENADSTADEN Översiktsplan för Stockholm • Antagen av kommunfullmäktige 15 mars 2010



[www.stockholm.se/oversiktsplan](http://www.stockholm.se/oversiktsplan)



# (1) Strengthen central Stockholm

- Renew the CBD and complete the development of the *strategic development areas*
- Develop well connected and dense urban environments in the inner suburbs



...and take advantage of the attractiveness of the dense city and its potential for sustainable mobility



SOLNA

LIDINGÖ

KAROLINSKA /  
NORRA STATION

HJORTHAGEN /  
VÄRTAN /  
FRIHAMNEN

NORDVÄSTRA  
KUNGS HOLMEN

Sdf Kungsholmen

Sdf Norrmalm

Sdf Östermalm

Citybanan

Österleden

NACKA

LILJE-  
HOLMEN

HAMMARBY  
SJÖSTAD

Sdf Södermalm

Södra Länken

Sdf Hagastråket/Hjortholmen

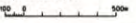
Tvärbanan

Oversikt  
Stockholms stadsutveckling

- Befintlig bebyggelse
- Bostäder
- Verksamheter
- Skolverksamheter
- Norra/Södra Länken/Österleden
- Citybanan
- Tvärbanan
- Nationalstadsparken

STADSBYGGNADS  
KONTORET  
September 2007

2014-09-03





1996



[www.stockholm.se/oversiktsplan](http://www.stockholm.se/oversiktsplan)

2009



[www.stockholm.se/oversiktsplan](http://www.stockholm.se/oversiktsplan)

# NORRA STOCKHOLM ROYAL SEAPORT DJURGÅRDSSTADEN



[www.stockholm.se/oversiktsplan](http://www.stockholm.se/oversiktsplan)





[www.stockholm.se/oversiktsplan](http://www.stockholm.se/oversiktsplan)

## (2) Focus on strategic nodes

- A development strongly related to infrastructure extensions
- Create attractive housing in more dense and versatile urban environments
- Prioritise culture, events and sports



...and create better balance among Stockholm's neighbourhoods and new possibilities for transverse links that connect the city parts



# Farsta







[www.stockholm.se/oversiktsplan](http://www.stockholm.se/oversiktsplan)

### (3) Connect city areas

- Create and support a new network of strategic nodes in the outer city
- Develop a coherent urban structure and reduce barriers
- Invest in attractive parks and public spaces between neighbourhoods

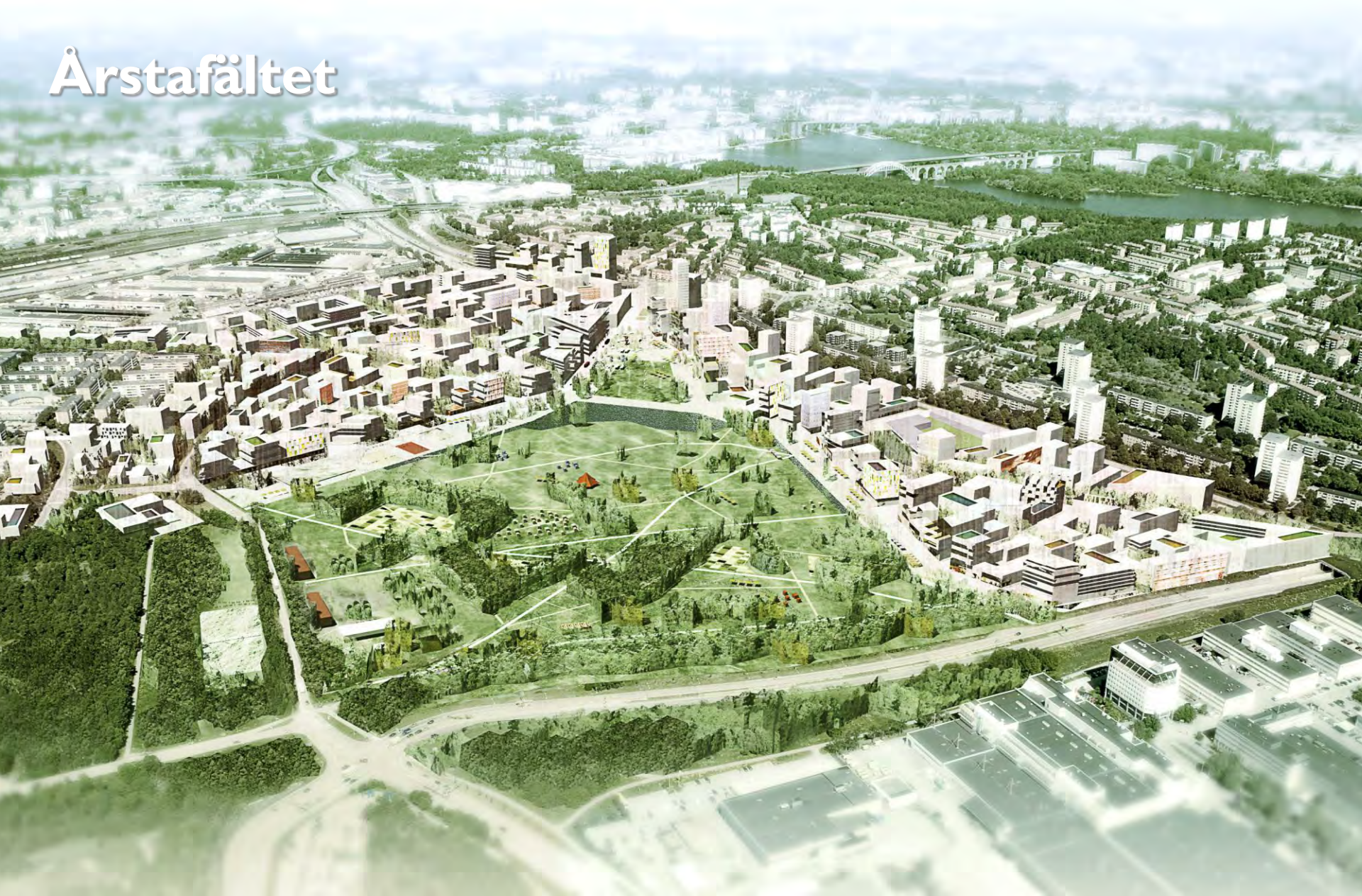


...and provide better opportunities to interact and travel in a safe and sustainable way



[www.stockholm.se/oversiktsplan](http://www.stockholm.se/oversiktsplan)

# Årstafältet



# Finished by 2015

**E 18 Hjulsta-Kista, 2015**



**Tvärbanan Solna, 2013**



**Norra länken, 2015**



**Annedal, 2015/2016**



**Älvsjö centre & travel centre, 2014**



**Telefonplan, 2015**



**The Stockholm Arena, 2013**



2011

2015

2020

2025

2030



# Finished by 2020



# Finished after 2020

Kista Science City, 2025



Hagastaden, 2025



The Royal Seaport, 2025



Stockholm Bypass, 2022



Söderstaden, 2030



Årstafältet, 2030



2011

2015

2020

2025

2030



# Unique digital infrastructure

One of the world's  
largest open fibre-optic  
networks

E-services make life  
easier

Innovative IT region

Intelligent Community  
of the Year 2009





# Examples of other important steering documents - in line with Vision 2030 and City Plan

- Urban mobility strategy (2014)
- Environmental Programme (2012-2015)
- Road map to a fossil free Stockholm (2014)
- Upcoming: Strategic Green Plan and  
Architecture Stockholm

# Urban mobility strategy

## A new traffic hierarchy for Stockholm



... completed by cycle plan,  
parking plan, congestion  
charge

### Principles/goals:

- Priority to w/c, public transport and goods
- Higher speed for public transport
- Streets for people not for parking cars
- Steering of road traffic by incentives and fees

# Congestion tax increases accessibility and reduces environmental impact

**20%** less traffic

**up to 10%** reduction in emissions

**more than 10%** better air quality

Despite a growing population, traffic travelling through Stockholm's city centre has not increased since 2007.



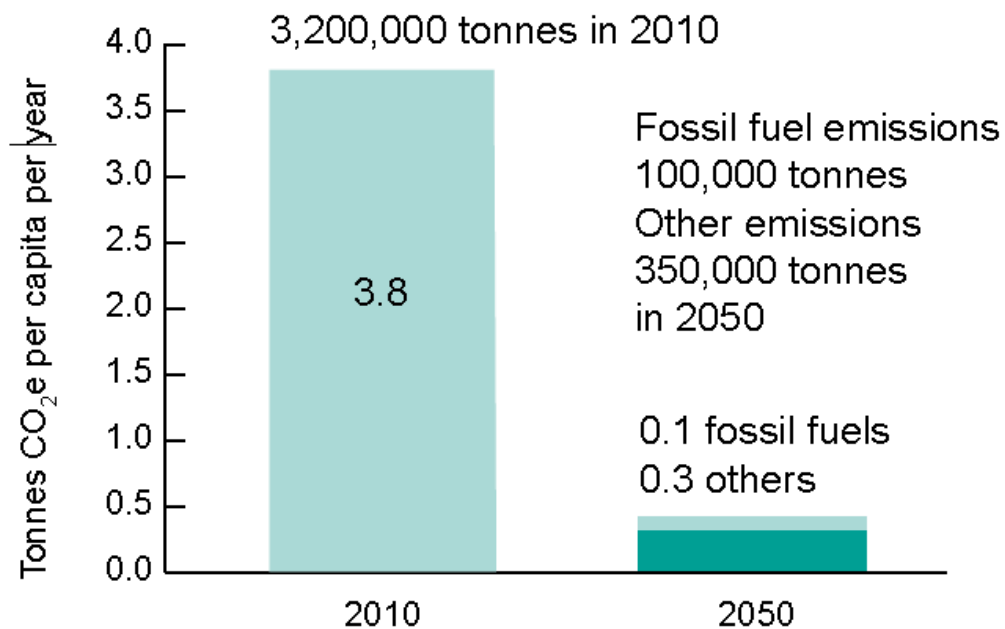
# Environmental Programme 2012-2015

- Structured, documented and goal-oriented way with environmental issues since the 1970s
- Eighth in the city's history
- Nature and people complement each other
- Work characterized by function, qualities and biodiversity
- Goals, follow-up and projects along six major themes



# Roadmap to a fossil fuel-free Stockholm 2050

- Emissions within Stockholm's boundaries
- Heating/cooling, transport and el/gas for production and households
- Result: Small amount of GHG emissions in 2050 feasible, but depending on many external factors/others
- Reaching this goal is the political will and ambition (C40, CCI+, Covenant of Mayors, EUROCITIES)



Estimated emissions of climate gases in Stockholm in 2010 and 2050 in tonnes per inhabitant.

# Final remarks

- High growth rates and development pressure on Stockholm – sustainable urban planning is more important than ever
- Huge investments in housing and infrastructure during the next two decades
- Changing preconditions – flexible planning necessary
- Traffic problems, CO<sub>2</sub> and other emissions are major challenges
- The City Plan is an important guiding instrument, a “common play field” for Stockholm’s future

▪ **Many  
challenges  
remain**

High  
ambitions

Strategic  
collaboration



Stockholms  
stad

# Thank you!

Useful link:

<http://international.stockholm.se/>

Michael Erman, Strategic planner  
City of Stockholm, Planning Department  
+46 8 508 271 47, [michael.erman@stockholm.se](mailto:michael.erman@stockholm.se)

